



INNOVATION IN BATTERY TESTING CTEK BATTERY ANALYZER

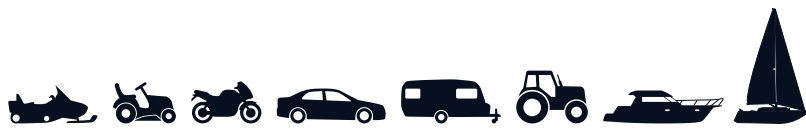
The CTEK Battery Analyzer tests with high accuracy the condition of all types of 12V lead-acid batteries including Wet, Maintenance Free, Ca/Ca, Gel and AGM. Easy to use it provides fast, and easy to understand results. Operating voltage range is 8 - 15V with a test range of 200-1200 CCA. Simply connect the clamps to the battery and follow the step by step instructions on the display. The easy to read display gives clear information on the condition of any 12V lead-acid battery and advises what action is required. With no need to disconnect the battery from the vehicle, the patented technology used by the CTEK Battery Analyzer is safe for the user and vehicle electronics. It is reverse polarity protected, creates no battery loads, heat or sparks. The CTEK Battery Analyzer features a 2 year warranty.



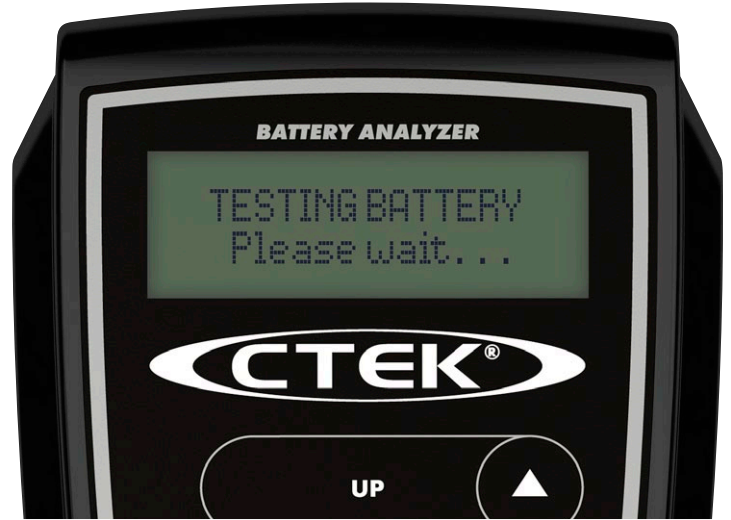
TECHNICAL DATA

TYPE OF ANALYZER	Conductance
TYPE OF BATTERY ANALYZED	12 V Lead-Acid
MIN. TESTING VOLTAGE	8 V
MAX. TESTING VOLTAGE	15 V
RESOLUTION (V)	0.1 V
ACCURACY (V)	± 0.1 V
RANGE (CCA)	200-1200 CCA
RESOLUTION (CCA)	25 CCA
ACCURACY (CCA)	± 25 CCA





EASY TO PERFORM BATTERY TESTING FROM CTEK



Easy to use – Simply attach to battery (no need to disconnect) and follow the on screen instructions.

Fast, Accurate Results – The CTEK Battery Analyzer tests the battery in seconds providing an instant on screen result which advises what action should be taken.

Safe – no heat or sparks – The patented technology used by the CTEK Battery Analyzer not only provides fast, accurate results but undertakes the test without placing load on the battery and generates no potentially dangerous heat or sparks.

For all 12V lead-acid batteries – The CTEK Battery Analyzer works equally well with all lead-acid battery types and requires no adjustment to perform an accurate test.

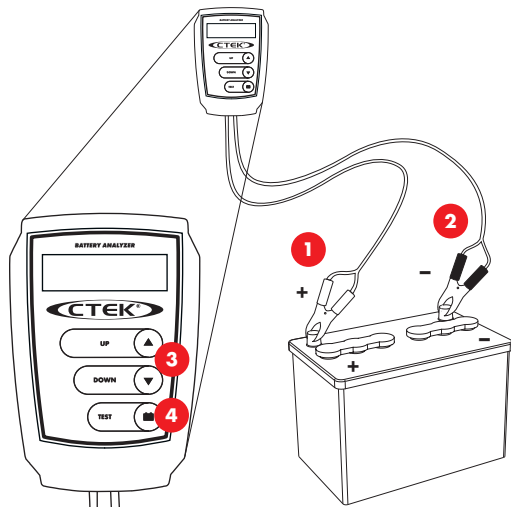
BATTERY TEST RESULTS

Battery Good – The battery is in good condition and there is no need to charge the battery.

Good Recharge – The battery is in good condition but charging is required to restore capacity.

Charge and Retest – Charge the battery and test again. The Analyzer wants to ensure the battery can retain the charge.

Replace Battery – The battery can no longer be relied upon to provide adequate service and should be replaced immediately.



1. Connect the red clamp to the positive battery terminal.
2. Connect the black clamp to the negative battery terminal.
3. Enter the EN value of the Battery to be tested by using the 'Up' or 'Down' button. (Default setting is 500CCA).
4. Press the 'Test' Button and the test result is displayed on the easy to read screen.

GUARANTEED QUALITY WITH CTEK

CTEK customer support is available to answer any questions related to charging and CTEK chargers. Safety, simplicity and flexibility characterizes all products and solutions developed and sold by CTEK. CTEK supply chargers to more than 60 countries throughout the world. CTEK is also a reliable OEM supplier to many of the world's most prestigious car and motorcycle manufacturers.

Contact customer support: info@ctek.com

CTEK POWER, INC.
2374 EDISON BLVD. TWINSBURG, OH 44087-2376,
UNITED STATES